



Cubbage Road
Managed
Natural
Landscape

7250 CUBBAGE
ROAD

7250 Cabbage Foeller Residence Landscape 3-Year Plan

Our Objectives for Our Land & the Greater Good of the Region:

- Encouragement of native, medicinal, endangered, threatened and other beneficial plants
- Habitat for birds, butterflies and beneficial insects
- Filtering of toxins from runoff before entering streams
- Cooling effect on microclimate and region
- Personal enjoyment (fresh air, shade, cooler summer yard temperatures, sounds of birds, crickets and wildlife) for mental, spiritual and emotional health.
- Aesthetic value



Our Goals for Cooperation w/Township:

- A. Control of invasive and noxious weeds, shrubs and trees
- B. Maintain natural and environmentally supportive garden and landscape plants
- C. Maintain compliance with township ordinances concerning Managed Natural Landscapes.

Front Yard, Year One

Stage: Inventory & Evaluation

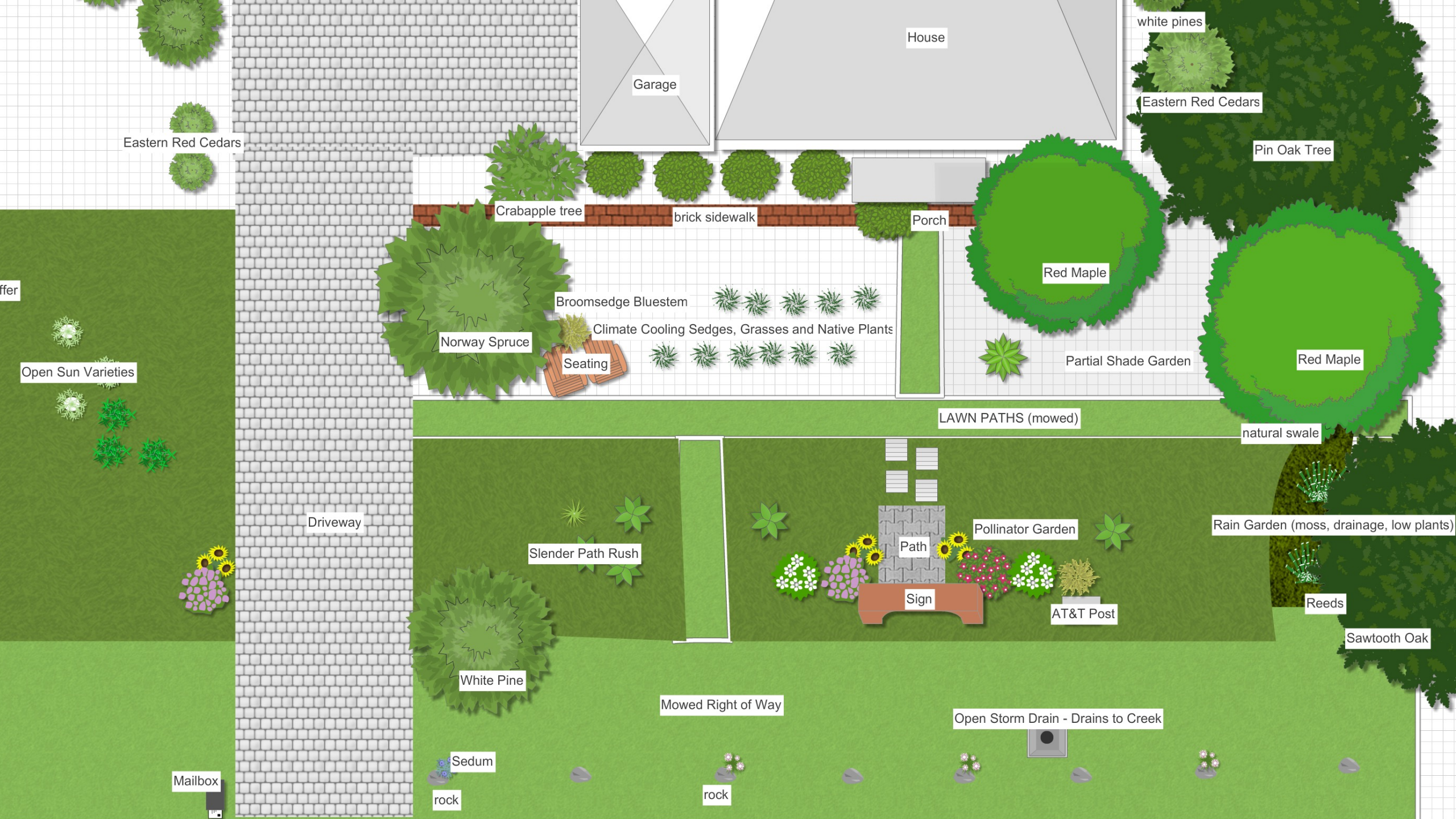
After years of close mowing, we allowed the existing plants to grow through their summer cycle, in order to inventory and document the existence of invasive and possible noxious plants, as well as beneficial plants such as natives, pollinators, wildflowers, medicinals and other beneficial plant species. From this information, we are seeking to learn which plants are transplantable and which may be candidates for collecting their seeds for controlled broadcast.

Results so far:

- Discovery of native, beneficial and medicinal plants (Vernonia, Broomsedge, Purpletop Tridens, clover, plaintain)
- Discovery of invasive plants (autumn olive, callory pear)
- Predomination of European grasses and sedges in front yard
- Zero plants from Ohio noxious plant list

Actions before fall:

- Control invasives
- Create decorative sign for public awareness of the nature project
- Maintain mowed setback from road and property borders
- Continue to introduce sun-loving threatened, endangered and native plants that flower to produce blooms and buffer road noise, using plan diagram as a guide, including native Vernonia, Jo Pye, Jewel Plant.



Features of Plan

- ♦ Setbacks provided for in alignment with Managed Natural Landscape standards
- ♦ Distinct areas cultivated for distinct objectives
- ♦ Intentional pathways and garden borders

From the definitive guide to planning, cities, neighborhoods, home and private gardens:

“Many gardens are formal and artificial. The flower beds are trimmed like table cloths or painted designs. The lawns are clipped like perfect plastic fur. The paths are clean, like new polished asphalt. The furniture is new and clean, fresh from the department store. These gardens have none of the quality which brings a garden to life – the quality of a wilderness, tamed, still wild, but cultivated enough to be in harmony with the buildings which surround it and the people who move in it. In the garden growing wild the plants are chosen, and the boundaries placed, in such a way that the growth of things regulates itself. It does not need to be regulated by control. But it does not grow fiercely and undermine the ways in which it is planted.”

– A Pattern Language

Front Yard Left Side Plant Detail - Year One

Heliopolis (native)

Late boneset (native)

Slender Path Rush (native)

Anise hyssop (native)

Vernonia (native)

Broomsedge Bluestem (native)

Sedum (beneficial)

Compass Plant (endangered species)

Longflower Alumroot (threatened species)

Bowman's Root (threatened species)





Front Yard Right Side Plant Detail – Year One

Timothy (beneficial)

Seductive Entodon Moss (native)

Large-leaved Avenas (native)

Canadian Meadow Garlic (native)

Heliopolis (native)

Late boneset (native)

Anise hyssop (native)

Vernonia (native)

Broomsedge Bluestem (native)

Compass Plant (endangered species)

Longflower Alumroot (threatened species)

Bowman's Root (threatened species)

Front Yard, Year Two

Stage: Encourage Beneficial Plants, Eliminate Invasives

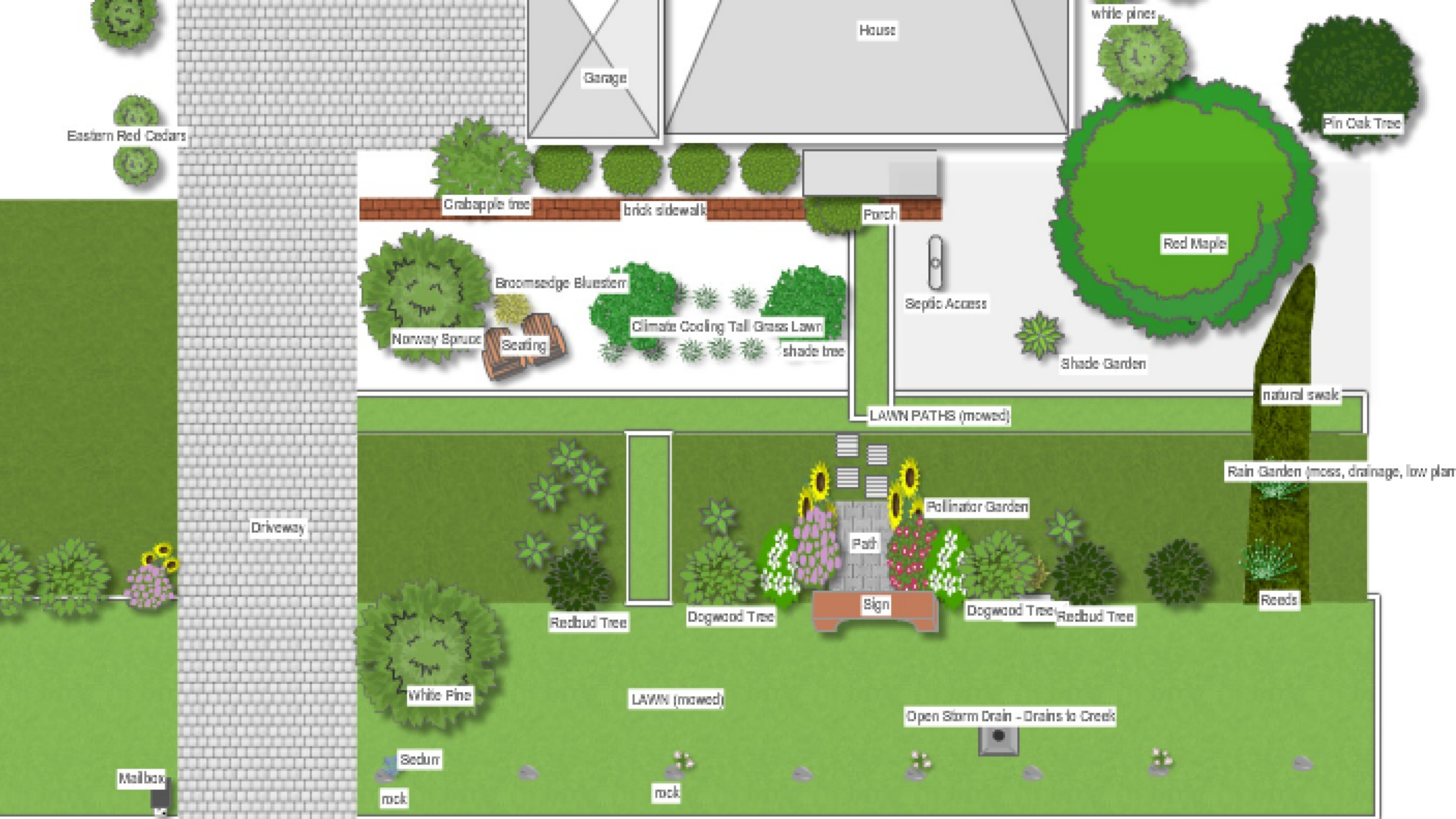
Spring Actions:

- Plant large tree saplings for future shading and cooling of front of house
- Plant small tree saplings at setback line to buffer traffic noise
- Continue to remove invasives
- Encourage growth and spread of wildflowers, pollinators and natives planted in 2024

Fall Actions:

- Continue to introduce sun-loving threatened, endangered and native plants that flower to produce blooms and buffer road noise, using plan diagram to guide, including native Vernonia, Jo Pye, Jewel Plant.
- Continue to remove invasives





Front Yard, Year Three

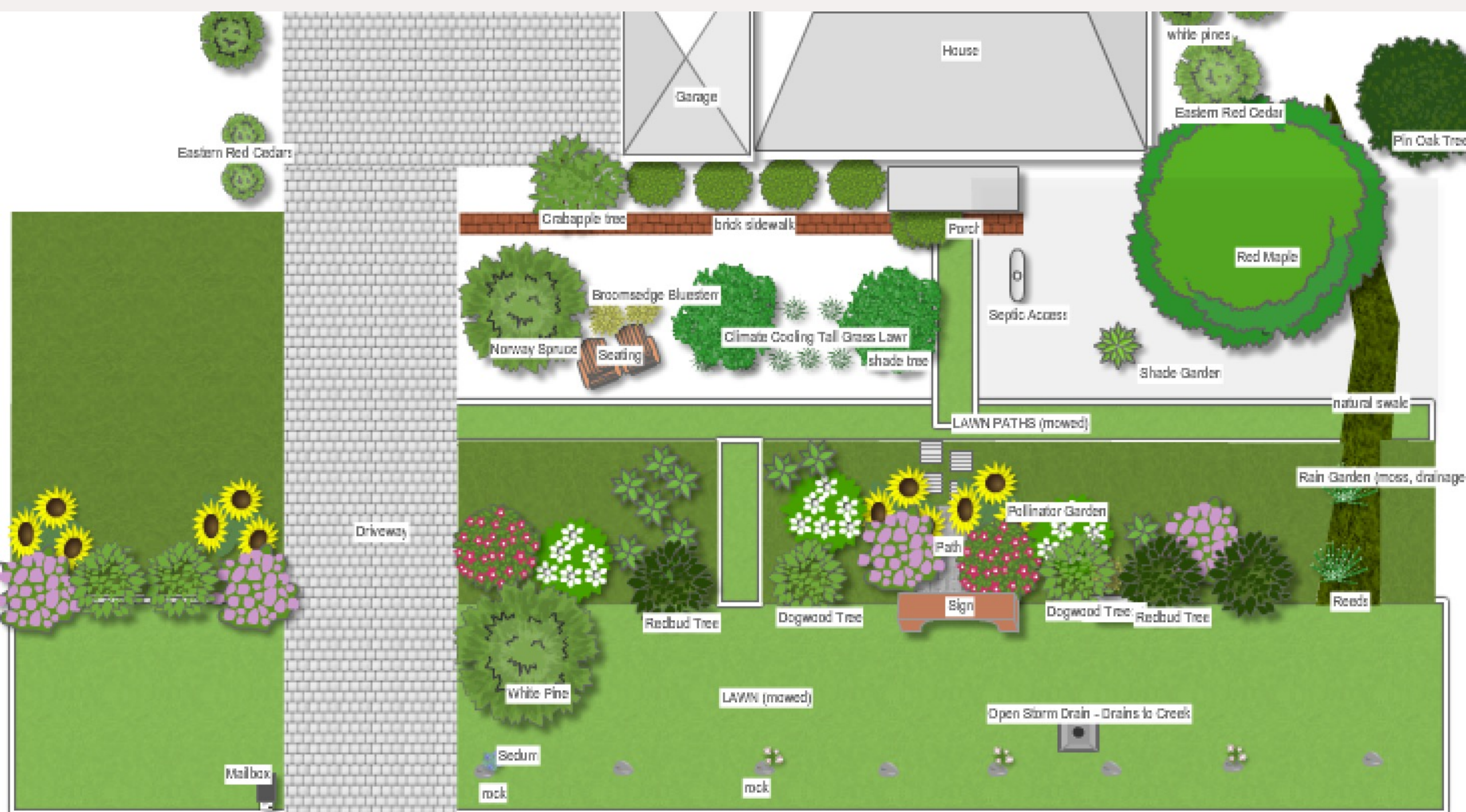
Stage: Beneficial Plants Thriving and Spreading, Continue to Eliminate Invasives

Spring Actions:

- Nurture new trees for shading and cooling of front of house and at setback line for noise buffer
- Continue to remove invasives
- Encourage growth and spread of wildflowers planted in 2024 and '25. Transplant and seed as indicated.

Fall Actions:

- Continue to introduce sun-loving threatened, endangered and native plants that flower to produce blooms and buffer road noise, using plan diagram to guide, including native Vernonia, Jo Pye, Jewel Plant. Increase blooms, decrease grass.
- Continue to remove invasives
- Mow paths and designated strategic areas that require invasive control.



Questions/Contact

Alice Foeller

alice@alicefoeller.com

614-887-7483

Plan and Presentation copyright Alice Foeller 2024

